



NEW ENGLAND REAL ESTATE JOURNAL

Friday, June 4, 2009

THE LARGEST BUSINESS PUBLICATION OF ITS KIND IN THE NATION

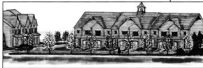
Tilton and Assoc., engineer; Gregory J. O'Connor Architects, Inc., architect

SF Properties to develop 38-unit condominium in N. Attleboro for \$8.5m

NORTH ATTLEBORO,
MA. - SF Properties,

Inc. of Brookline, after 18 months of neighborhood and public hearings, the Town of North Attleborough

approved a 38-unit condominium development at 148 to 148-1/2 Commonwealth Ave. The project, which will be constructed on the old Blackinton manufacturing site, will be called Blackinton Commons.



According to Gerald Cohen, (above) president of SF Properties, SF will acquire the properties this month and immediately begin construction of the phased development. It is anticipated that the first units will be ready for occupancy in late fall.

The units will be either two or three story units consisting of two bedrooms, living room, dining room, kitchen, two and a half bathrooms, and an enclosed garage. The living space will range in size from approximately 1550 to 1700 sq.

The development team consists of Century 21 -Ed Parsons, selling agent; BankNorth, lender; SF Properties, developer; Tilton and Associates, engineer; Gregory J. O'Connor Architects, Inc., architect, and Strata Design, landscape architects.